

# HERADESIGN® *macro*

1-layer magnesite bonded  
wood wool acoustic panel  
(fibre width approx. 3 mm)

- characteristic surface texture
- building biology recommended



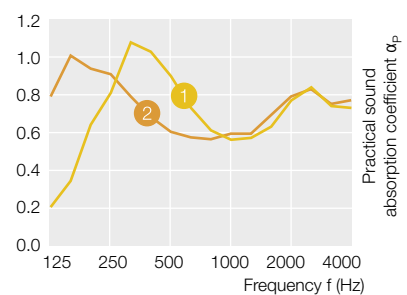
Product data sheet  
HERADESIGN® *macro*



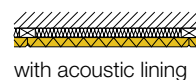
Product range for HERADESIGN® *macro*

Nominal size mm (further sizes on request)	600 x 600 mm	
	1200 x 600 mm	
Thickness	1-layer	25 mm
Weight kg/m <sup>2</sup>	12.4	
ABZ General Building Approval: Z-23.15-1562		
Reaction to fire according to EN 13501-1: B-s1, d0		
Special formats on request	Length of max. 2400 mm	

Sound absorption values

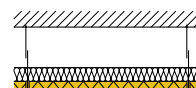


1  $\alpha_w$  up to 0.70 NRC = up to 0.75



with acoustic lining

2  $\alpha_w$  up to 0.70 NRC = up to 0.75



suspended with acoustic lining



Extensive detailed information and sketches can be found at  
[www.heradesign.com](http://www.heradesign.com).