

#### Note on English translation / Hinweise zur englischen Fassung

This is a translation of the technical data sheet valid in Germany.

All stated details and properties are in compliance with the regulations of the German standards and building regulations. They are only applicable for the specified products, system components, application rules, and construction details in connection with the specifications of the respective certificates and approvals.

Knauf Gips KG denies any liability for applications outside of Germany as this requires changes acc. to the respective national standards and building regulations.

Drywall Systems

E112a.de

Product Data Sheet

2018-05



## REVO 18 Variant

Access panel for wall and ceiling systems

### Product description

Access panel for installation in walls and in suspended ceilings without building physics requirements.

REVO 18 Variant consists of:

- Anodised aluminium outer frame
- Openable and fully detachable hatch
- Flush adhesively bonded gypsum board Diamant GKFI (200 x 200 mm to 600 x 600 mm)
- With dimensions > 600 mm supplied only as a screw fixed variant, with dimensions > 800 mm supplied only with trimmer profiles

### Properties and added value

- All-purpose use for cladding thickness 15 and 18 mm
- Can be retrofitted
- Can be tiled

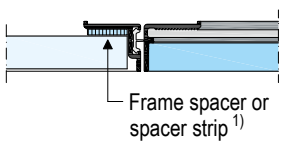
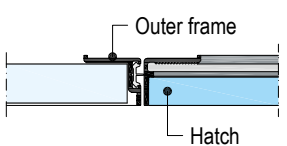
### Field of application

All-purpose use for ceilings and walls, e.g.:

- Drywall partitions
- Furrings
- Suspended ceilings

## Application

### Installation

Cladding	
15 mm	
18 mm	

1) Frame spacers or spacer strips are included in the packaging if they have been ordered as accessory equipment.

<b>Notes</b>	With rectangular ceiling access panels, the lock and hinge system is always mounted as standard on the long side. With wall mounted access panels, the lock system is always at the top and the hinge system is always at the bottom.
	The required length of the screws is determined by the cladding thickness. At least <ul style="list-style-type: none"> <li>■ 2 screws per frame side for hatch size &lt; 500 x 500 mm</li> <li>■ 3 or 4 screws per frame side for hatch size ≥ 500 x 500 mm</li> </ul> Distance between screw centres maximum 200 mm. No joints in the cladding are allowed near the access panels.  Observe the installation instructions enclosed with the product.  Apply the ceiling, wall and furring systems in accordance with the respective most current Knauf system data sheets.

Use Schnellbauschrauben TB screws or Diamantschrauben XTB screws for the attachment of the frame to the cladding.

The access panel can be installed together with the grid or when the cladding is applied.

Make the cut out opening 12 mm larger than the access panel size (= clearance).

Arrange trimmers made of CD or CW studs/UW runners in accordance with the dimension of the access panel. Maintain distances between cut-out section and trimmer profiles of at least 30 mm and a maximum of 100 mm. Mount 4 additional suspenders in the corner areas of the access panel when mounting in ceilings.

Additional suspenders are required for trimmers on suspended ceiling profiles.

Place outer frame of the access panel in the opening, lay it on the cladding, align and screw attach. Subsequently, insert the hatch and check the lock for proper functioning. If the distance to the installations in the wall or ceiling is < 200 mm, it is necessary to perform installation of the outer frame in the gypsum board together with the cladding. With wall access panels, a clearance of ≥ 30 mm must be ensured in the upper third of the rear side of the hatch for opening the panel. Depending on the construction type and installation conditions of the access panels trimmers made of profiles are necessary (see scheme drawings).

### Subsequent installation possible

The cladding must be sawed out for subsequent installation of the access panel. Apply a frame made of circumferential profile pieces (CD channels or CW studs/UW runners) and screw attach them (screw spacing ≤ 150 mm).

### Jointing

Fill outer frame and ceiling or wall surface of access panel with Uniflott. It is not necessary to fill or skim the inner frame to surface quality Q2 with flush adhesively bonded gypsum boards. Fill in screw heads if the hatch is screw fixed. For surface quality level Q3 scrape skim the hatch face. Preparation for quality level Q4 on request.

### Cleaning

Clean outer frame, hatch, and in particular, seal thoroughly after filling.

### Coatings and linings

Surface treatment of the access panels with gypsum board inlays in acc. with the Knauf System Data Sheet of the relevant system.

### Access panel designed for tiling

Only apply the tiles using the thin bed method (max. adhesive thickness + tile 10 mm). Fill joint between cladding and outer frame after installation of the access panel. The edge of the wall tile can be directly applied on the clearance dimension. Insert the seal (available on request).

### Note for the painter

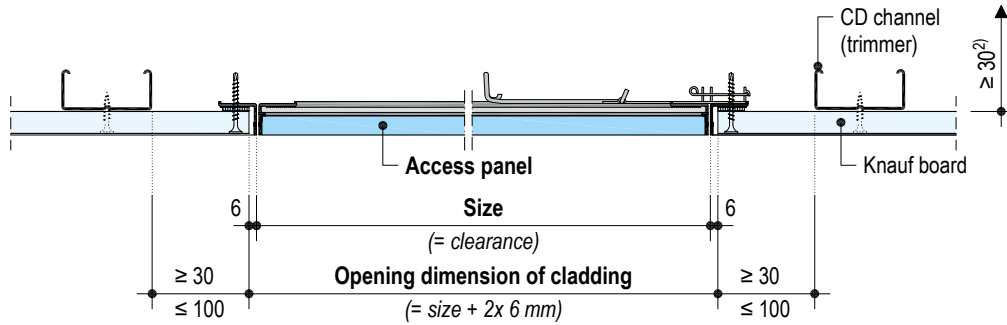
Generally remove the access panel hatch before painting separately so that no paint penetrates the narrow joint between the hatch and the outer frame.

Installation in the Knauf ceiling systems

E112a.de-V1

e.g. version 15 mm – without seal, vertical section

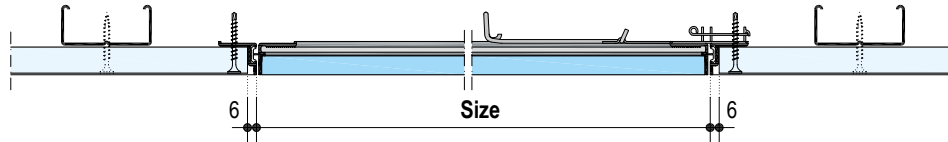
Scheme drawings, all dimensions in mm



2) Clearance to basic ceiling / installations

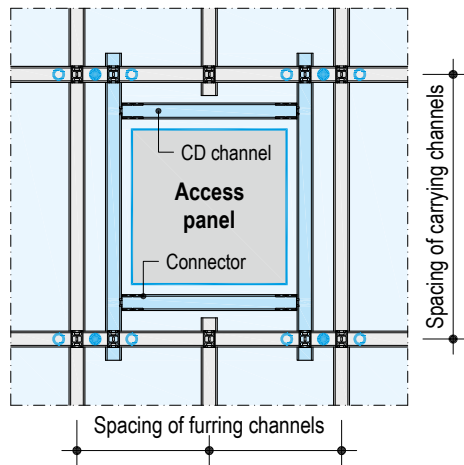
E112a.de-V2

e.g. Version 18 mm – with seal, vertical section

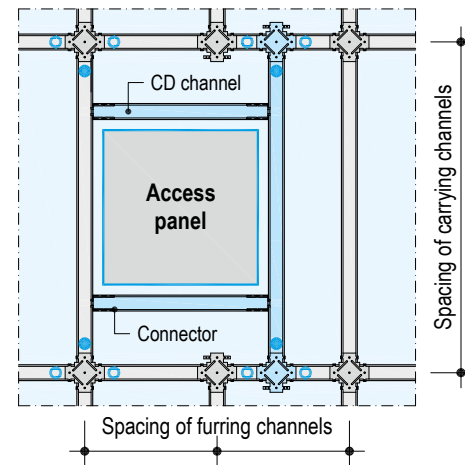


Examples, scheme drawings of ceiling installation

Double-level metal grid (e.g. D112.de)



Flush metal grid (e.g. D113.de)



Additional grid

4 additional suspension points (e.g. Nonius suspension)

Alternative suspension points

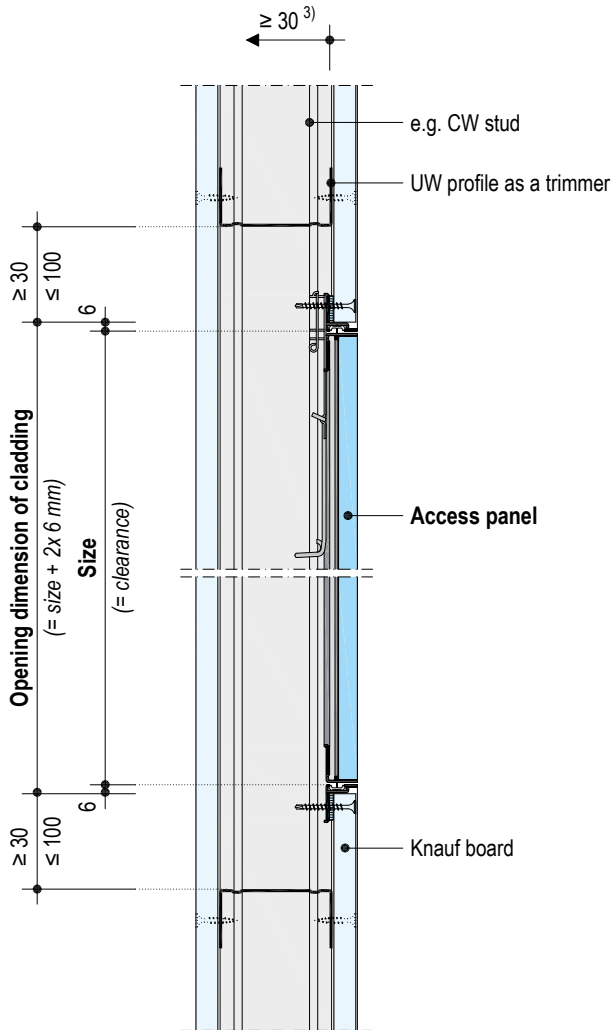
Universal connectors are required for the trimmers. Further suspenders are required if the suspended profiles are to be exchanged.

Installation in the Knauf wall systems

Dimensions in mm

E112a.de-V3

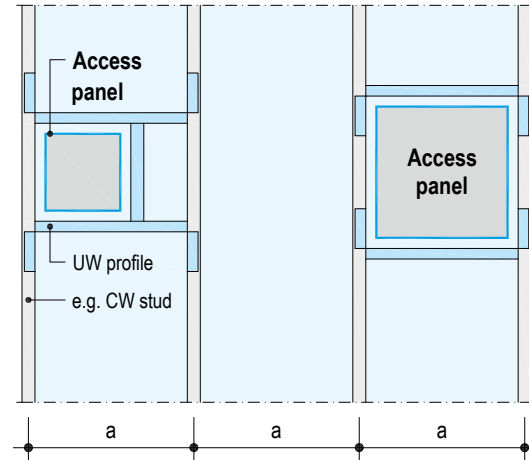
e.g. partition system, version 15 mm – with seal, vertical section



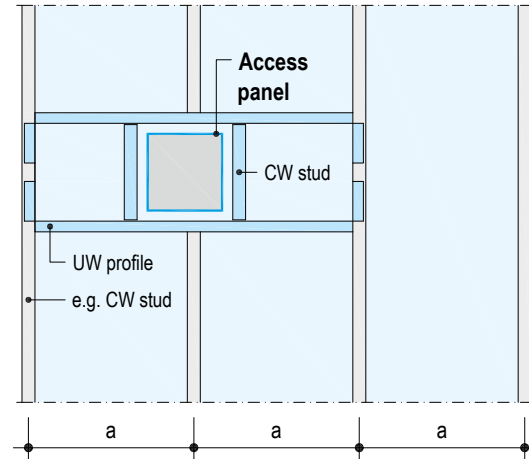
3) Opening displacement clearance of the access panel

Examples, scheme drawings of wall installation

Stud spacing a continuous



Stud spacing a with cut stud and trimmer profiles



Additional grid

Product range

Description	Width x length mm	Weight kg/pieces	Packaging unit	Material number	EAN
REVO 18 Variant	200 x 200	1.4	1 piece / pack	00111881	4003982203212
	300 x 300	2.3		00111882	4003982203229
	400 x 400	3.2		00111883	4003982203236
	500 x 500	4.4		00111884	4003982203243
	600 x 600	6.4		00111885	4003982203250
	Special ≤ 800			00111894	4003982203847
	Special > 800			00112542	4003982204288

**Required specifications for ordering**

- Dimension of the access panel (width x length)
- Access panel for tiling: Specify tile dimensions (width x height), joint width, adhesive thickness, tile thickness and cladding thickness  
(The exact clearance is determined by the tile format.)
- Additional options / special designs

**Additional options / special designs**

- Intermediate dimensions
- Multi-part design
- Airtight and dust-proof access panel (EN 1026+12207 class 3, suction and pressure)
- Four-square bolt
- Round cylinder lock
- Lock designed for profile cylinder
- Screw fixed gypsum board Diamant GKFI for on-site exchange
- Designed for on-site creation of surface quality level Q4
- Prepared for on-site tiling



The iPad App Knauf Infothek now provides all the current information and documents from Knauf Gips KG at any time and in every location in a clear and comfortable way.

[Knauf Infothek](#)

**Knauf Direct**  
Technical Advisory Service:

▶ [knauf-direkt@knauf.de](mailto:knauf-direkt@knauf.de)

▶ [www.knauf.de](http://www.knauf.de)

**Knauf Gips KG** Am Bahnhof 7, 97346 Iphofen, Germany

All technical changes reserved. Only the current printed instructions are valid. The stated information represents current state-of-the-art Knauf technology. The entire state of approved engineering rules, appropriate standards, guidelines, and rules of craftsmanship are not included herewith. These and all application instructions have to be adhered to separately by the installer. Our warranty is expressly limited to our products in flawless condition. All application quantities and delivery amounts are based on empirical data that are not easily transferable to other deviating areas.

All rights reserved. All amendments, reprints and photocopies, including those of excerpts, require our expressed permission.