

KNAUF

METAL Linear Stripe

Metal Linear Ceilings



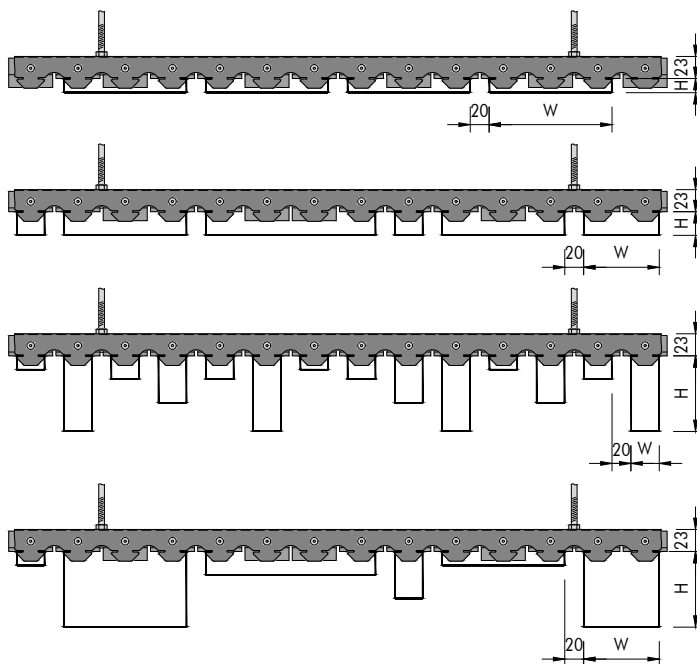
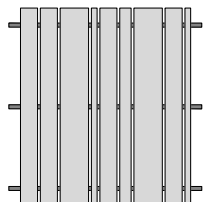
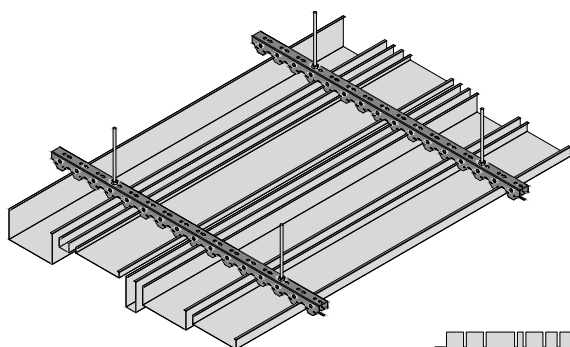
© Rendering

METAL Linear Stripe solutions offer endless possibility for combinations and creative design

- Linear Stripes are available in a variety of colours, widths, heights and lengths using the same hanging profile
- Combine horizontal and vertical modules in different dimensions and colours for ultimate design freedom
- In addition to standard colours, Linear Stripes are also available in WOOD Design effects
- Additional design options available as part of our Vario design range

Build on us.





Stripes

- Material pre-coated aluminium 0.6 mm
- Edge detail square edged
- Dimensions length (L) 3000 mm
 (Vario Design: min. 1000 / max. 4000 mm)
 width (W) x height (H)
 30 x 15 / 80 x 15 / 130 x 15 / 180 x 15 mm
 30 x 25 / 80 x 25 / 130 x 25 / 180 x 25 mm
 30 x 50 / 80 x 50 / 130 x 50 mm
 30 x 80 / 80 x 80 / 130 x 80 mm

Suspension system

Standard carrier profile

Characteristic	Detailed information	
Colour / Perforations		RAL 9016 RAL 7016 RAL 9005 Oak Light Oak Dark further colours on request
Weight		0.11 – 0.48 kg/m²
Fire reaction		Euroclass A1; as per EN 13501-1
Light reflectance		RAL 9016: 87% , RAL 7016: 8% , RAL 9005: 4%
Humidity resistance		90% RH
Indoor air quality		 A+ (French VOC)
Cleanability		