

Note on English translation / Hinweise zur englischen Fassung

This is a translation of the product data sheet valid in Germany.

All stated details and properties are in compliance with the regulations of the German standards and building regulations. They are only applicable for the specified products, system components, application rules, and construction details in connection with the specifications of the respective certificates and approvals.

Knauf Gips KG denies any liability for applications outside of Germany as this requires changes acc. to the respective national standards and building regulations.

Drywall Systems

E139.de

Product Data Sheet

2019-03

SYSTEM X-Ray Shielding Safeboard

Access panel for X-ray shielding systems with Safeboard

Product description

SYSTEM X-ray shielding Safeboard is an access panel consisting of:

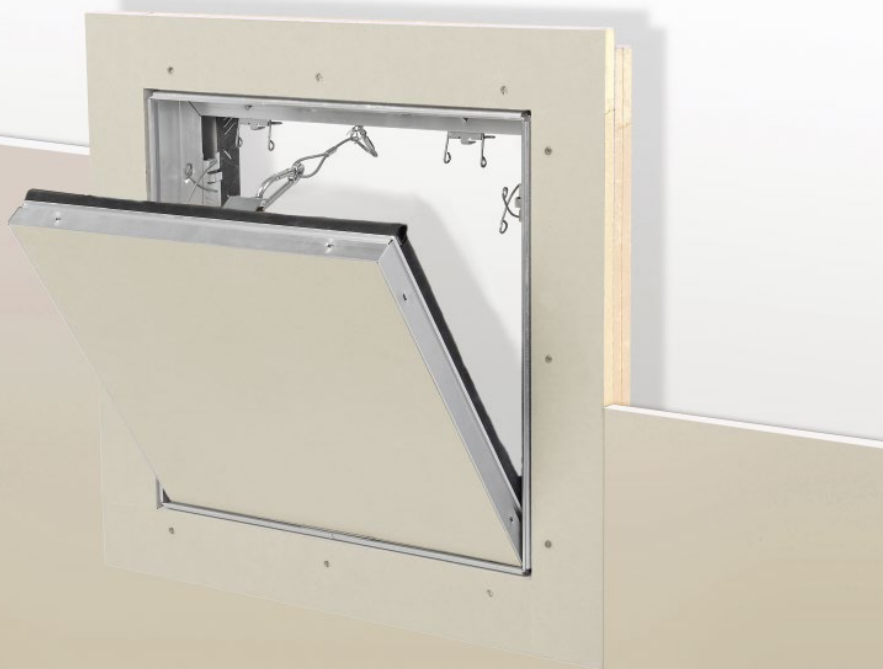
- Anodised aluminium outer frame
- Openable and fully detachable hatch
- Factory installed flush mounted adhesively bonded Safeboard

Properties and added value

- All-purpose use for cladding thicknesses 12.5, 25 and 37.5 mm
- Can be retrofitted
- Can be tiled
- Protection against radiation without lead

Field of application

Installation in Safeboard X-ray shield partitions / Safeboard furrings / Safeboard ceilings with cladding thickness 12.5, 25 and 37.5 mm.



Design

It can be installed together with the substructure / grid or when the cladding is applied.

Trimmer

Arrange trimmers made of CD channels or CW studs or UW runners in the grid in accordance with the dimension of the access panel.
Mount 4 additional suspenders in the corner areas of the access panel when mounting in ceilings.

See the design details and the scheme drawings on the following pages.

Cladding

Manufacture the cut-out to suit the quantity and combination of cladding layers in the following drawings. Screw fasten the ceiling cladding to the trimmer profiles as well.

Subsequent installation

The cladding must be sawed out for subsequent installation of the access panel. Apply a frame made of circumferential profile sections (CD, UW or CW) and attach them with screws (screw spacing ≤ 150 mm).

Installation of the access panel

Place gypsum board frame of the access panel on the profile trimmer, place it on the cladding, align and screw attach. Use Diamant Screws XTN for the attachment of the gypsum board frame to the grid. At least 3 screws per frame side. Distance between screw centres maximum 150 mm. The required screw length depends on the cladding thickness:

- Single-layer cladding: XTN 3.9 x 23
- Double-layer cladding: XTN 3.9 x 38
- Triple-layer cladding: XTN 3.9 x 55

Subsequently insert the hatch and check the lock for proper functioning

Jointing

Fill gypsum board frame of access panel and the ceiling or surface cladding. In case of Safeboard as a visible layer use Safeboard filler (1st work step) and Uniflott (2nd work step), in case of Diamant as a visible layer use Uniflott for both steps. Recommendation: Fill the joint between the surface cladding and gypsum board frame with Fugendeckstreifen Kurt Joint Tape. It is not necessary to fill or skim the hatch to surface quality Q2 with flush adhesively bonded Safeboard or Diamant board. For surface quality Q3: Scrape skim hatch face.

Clean outer frame and hatch thoroughly after jointing.

Notes	With wall mounted access panels, the lock system is always at the top and the hinge system is always at the bottom. No cladding board joints are allowed near the access element.
	Access panel for ceiling installation deviates from the wall mounted access panel. Installation according to installation instructions
	Observe the installation instructions enclosed with the product. Construction of the systems in accordance with the Knauf Safety Engineering Brochure ST01.de

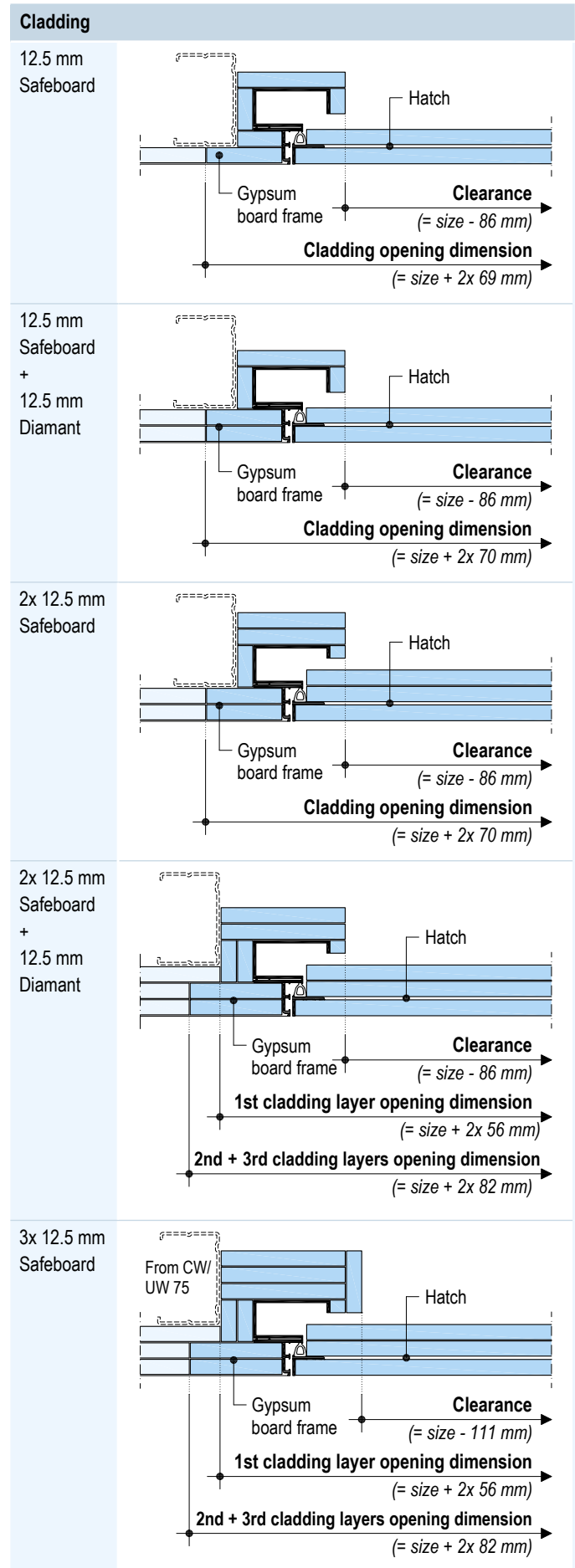
Coatings and linings

Surface treatment of the access panels with gypsum board inlays in acc. with the Knauf Safety Engineering Brochure ST01.de.

Note for the painter

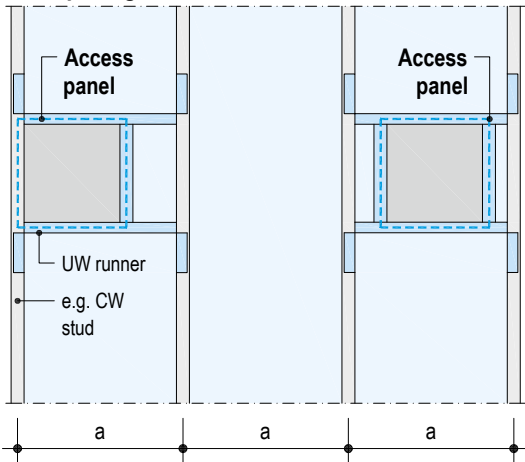
Generally remove the access panel hatch before coating and paint separately so that no paint penetrates the narrow joint between the hatch and the outer frame.

Clean any paint remnants from the frame.

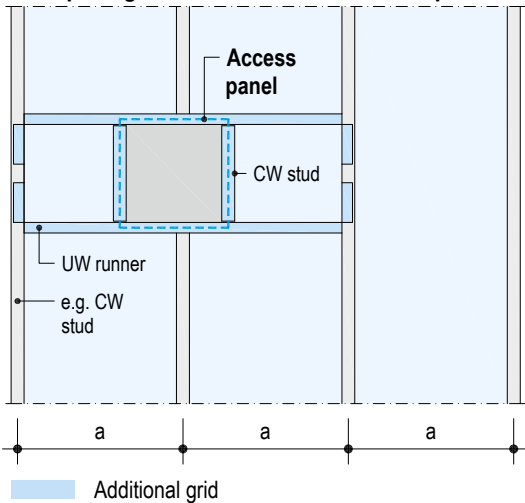


Examples, scheme drawings wall installation

Stud spacing a continuous

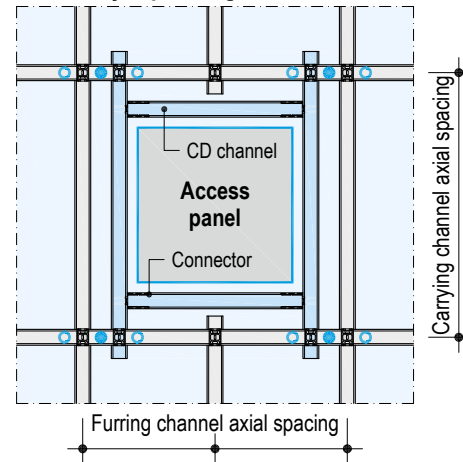


Stud spacing a with cut stud and trimmer profiles



Example, scheme drawing ceiling installation

Double layer profile grid



Additional grid

4 additional suspension points (e.g. Nonius suspension)

Alternative suspension points

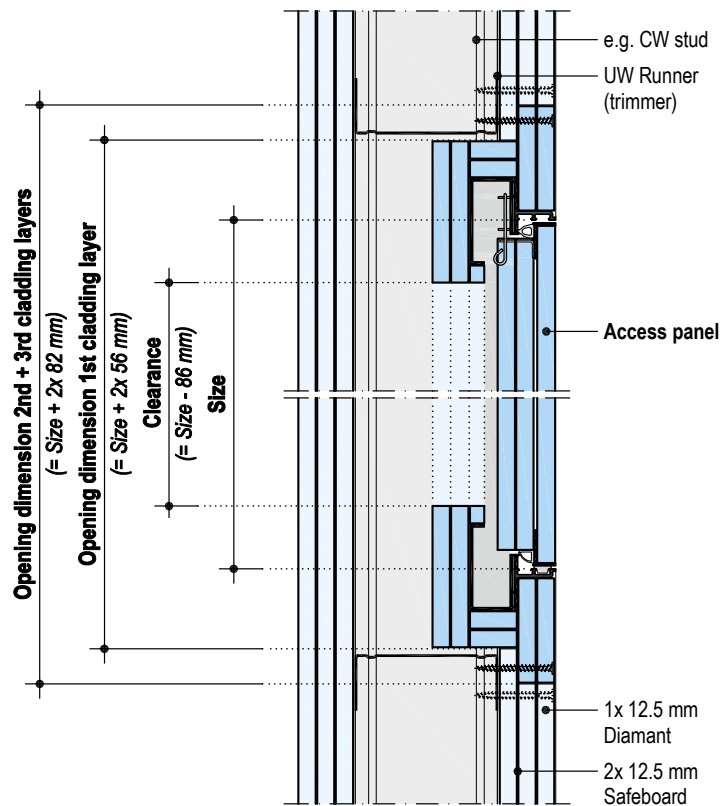
Universal connectors are required for the trimmers. Further suspenders are required if the suspended profiles are to be exchanged.

Design details

Scale 1:5 | Dimensions in mm

E139.de-V1 SYSTEM X-ray shielding Safeboard - vertical section

e.g. application 2x 12.5 mm Safeboard + 12.5 mm Diamant



Note

With cladding 3x 12.5 mm Safeboard
Clearance = Size - 111 mm

Product range

Description	Width x length mm	Packaging unit	Material number	EAN
SYSTEM X-Ray Shielding Safeboard	300 x 300	1 pieces / pack	00146403	4003982208866
	400 x 400			
	500 x 500			
	600 x 600			
	Customized			

Required specifications for ordering

- Dimension of the access panel (width x length)
- Installation, for example, in the ceiling, installation wall
- Cladding thickness
- Cladding type

Additional options / special designs

- Intermediate dimensions
- Airtight and dust-proof (class 3, EN 1026+12207, suction and pressure)



The iPad App Knauf Infothek now provides all the current information and documents from Knauf Gips KG at any time and in every location in a clear and comfortable way.

[Knauf Infothek](#)

Knauf Direct

Technical Advisory Service:

▶ knauf-direkt@knauf.de

▶ www.knauf.de

Knauf Gips KG Am Bahnhof 7, 97346 Iphofen, Germany

All technical changes reserved. Only the current printed instructions are valid. The stated information represents current state-of-the-art Knauf technology. The entire state of approved engineering rules, appropriate standards, guidelines, and rules of craftsmanship are not included herewith. These and all application instructions have to be adhered to separately by the installer. Our warranty is expressly limited to our products in flawless condition. All application quantities and delivery amounts are based on empirical data that are not easily transferable to other deviating areas.

All rights reserved. All amendments, reprints and photocopies, including those of excerpts, require our expressed permission.