

## OmniFit® Rolls 34 and 40

February 2026

Build on us.

### Description

OmniFit® Rolls are glass mineral wool rolls which are designed for use in multiple applications, offering thermal conductivity between 0.034 W/mK and 0.040 W/mK, combined with acoustic performance.

They are non-combustible with the best possible Euroclass A1 reaction to fire classification, and are manufactured using our unique plant based binder, ECOSE® Technology.

### Benefits

- › OmniFit® Roll 34 holds an Agrément certificate by the BBA (under reference number 24/7110) for use as insulation between rainscreen façade systems.
- › Multi-purpose product that can be used to insulate a wide range of applications, reducing the need to purchase and handle multiple products.
- › Designed to friction fit between studs, which prevents air movement and infiltration around the edges, minimising heat loss.
- › Compression packed with more product on a pallet than alternative rock mineral wool products.
- › Holds a CCPI Assessment Mark (certificate number 000600200/0228) for the entire product set.



NON-COMBUSTIBLE  
INSULATION



# OmniFit® Rolls 34 and 40

## Technical Specifications



### OMNIFIT® ROLL 34

Thickness (mm)	Thermal conductivity (W/mK)	Thermal resistance (m <sup>2</sup> K/W)	Length (m)	Width (mm)	Area per pack (m <sup>2</sup> )	Packs per pallet	GWP A1-A3 (kgCO <sub>2</sub> e/m <sup>2</sup> )	GWP A1-C4 (kgCO <sub>2</sub> e/m <sup>2</sup> )	GWP A1-A3 (kgCO <sub>2</sub> e/kg)	GWP A1-C4 (kgCO <sub>2</sub> e/kg)	Pallet product code
220	0.034	6.45	2.50	1200	3.000	24	3.64	4.81	0.77	1.01	416121
180	0.034	5.25	3.00	1200	3.600	24	2.98	3.94	0.77	1.01	416113
150	0.034	4.40	3.50	1200	4.200	24	2.48	3.28	0.77	1.01	417800
140	0.034	4.10	4.20	1200	5.040	24	2.32	3.06	0.77	1.01	474996
100	0.034	2.90	5.20	1200	6.240	24	1.66	2.19	0.77	1.01	417796

EPD ID: S-P-10839 The declared unit is 1m<sup>2</sup> of unfaced glass mineral wool OmniFit® Roll 34 with R-value of 2.90 m<sup>2</sup>K/W (for a thickness of 100 mm and a declared lambda of 0.034W/mK).



### OMNIFIT® ROLL 40

Thickness (mm)	Thermal conductivity (W/mK)	Thermal resistance (m <sup>2</sup> K/W)	Length (m)	Width (mm)	Area per pack (m <sup>2</sup> )	Packs per pallet	GWP A1-A3 (kgCO <sub>2</sub> e/m <sup>2</sup> )	GWP A1-C4 (kgCO <sub>2</sub> e/m <sup>2</sup> )	GWP A1-A3 (kgCO <sub>2</sub> e/kg)	GWP A1-C4 (kgCO <sub>2</sub> e/kg)	Pallet product code
200	0.040	5.00	3.40	1200 (2x600/3x400)	4.080	40	1.73	2.29	0.75	1.00	474509
150	0.040	3.75	4.55	1200 (2x600/3x400)	5.460	40	1.30	1.72	0.75	1.00	474386
100	0.040	2.50	6.80	1200 (2x600/3x400)	8.160	40	0.86	1.15	0.75	1.00	474381

All dimensions are nominal. EPD ID: S-P-10428 The declared unit is 1m<sup>2</sup> of unfaced glass mineral wool OmniFit® Roll 40 with R-value of 2.50 m<sup>2</sup>K/W (for a thickness of 100 mm and a declared lambda of 0.034W/mK).

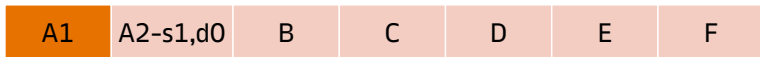
# OmniFit® Rolls 34 and 40

## Performance

THERMAL (W/mK)

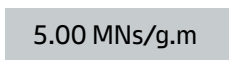


FIRE CLASSIFICATION



Euroclass reaction to fire classification

VAPOUR RESISTIVITY



## Applications

- Pitched Roofs Ceiling Level
- Pitched Roofs Rafter Level
- Frame Construction With Masonry Outer
- Suspended Timber Ground Floors
- Separating Floors Timber
- Internal Floors
- Separating Floors Upgrade to an existing timber floor with new ceiling
- Separating Floors Upgrade to an existing timber floor with platform floor
- Rainscreen Façade System\*
- Cold flat roof

## Certification, accreditations and industry standards

CE

INDOOR AIR COMFORT  
euoifins  
GOLD  
CERTIFIED PRODUCT

EUCB

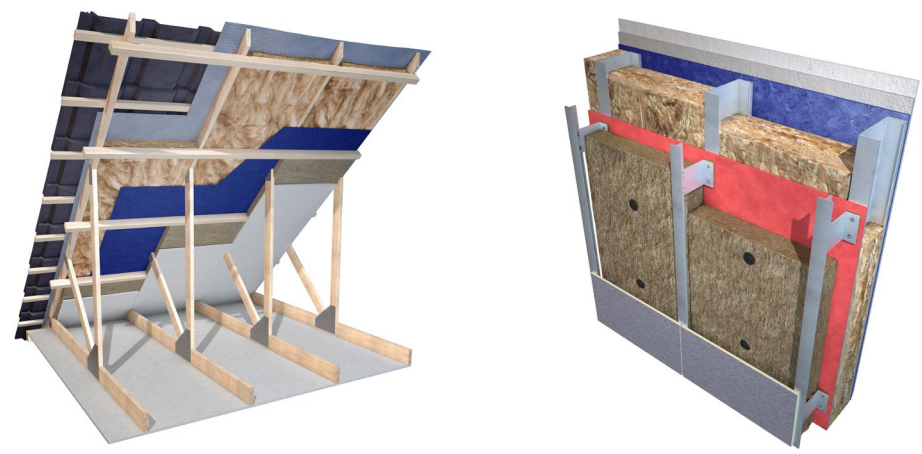
MADE IN BRITAIN

BBA APPROVAL INSPECTION TESTING CERTIFICATION  
CERTIFICATE 247710  
\*Not OmniFit® Roll 40

EPD®  
THE INTERNATIONAL EPD® SYSTEM

Declare. Red List Free

CCPI



\* Between steel studs

# OmniFit® Rolls 34 and 40

## Application

OmniFit® Rolls are typically used for the thermal and acoustic insulation of a variety of constructions such as timber frame walls, light steel and metal frame walls and between rafters.

OmniFit® Rolls are non-combustible.

## Standards and certification

OmniFit® Roll 34 has an Agrément certificate by the BBA (under reference number 24/7110) for use as insulation between the studs on timber- and steel-frame conventional walls in new and existing domestic and non-domestic buildings with a masonry outer leaf or a ventilated rainscreen cladding system.\*

OmniFit® Rolls have a product declaration made in conformity with the requirements of BS EN 13162:2012+A1:2015 and are manufactured in accordance with ISO 50001:2018 Energy Management Systems, ISO 14001:2015+A1:2024 Environmental Management Systems, ISO 45001:2023+A1 Occupational Health and Safety Management Systems, and ISO 9001:2015+A1:2024 Quality Management Systems.

All of our mineral wool products are made of non-classified fibres and are certified by EUCEB. EUCEB (European Certification Board of Mineral Wool Products - [www.euceb.org](http://www.euceb.org)) is a voluntary initiative by the mineral wool industry. It is an independent certification authority that guarantees that products are made of fibres which comply with the exoneration criteria for carcinogenicity (Note Q) of the Regulation (EC) 1272/2008.

OmniFit® Rolls are amongst the first products to carry the CCPI mark, helping to provide assurance to product users that the product information for these products is clear, accurate, accessible, up-to-date and unambiguous. The CCPI is playing a pivotal role in driving up standards in product information as the construction industry adapts to a new and improved building safety regime.

\* Please note, only the applications described within the above Agrément certificate by the BBA is covered. OmniFit® Roll 40 is not currently covered by the Agrément certificate by the BBA (under reference number 24/7110).

## Thermal Modelling

The U-value of a proprietary built element (rainscreen façade/ masonry cavity wall/garage soffit etc.) or system is dependent on the material properties and the degree of thermal bridging in the system.

Calculations should be created using 2D or 3D modelling programs which comply with the methodologies detailed in BS EN ISO 6946:2017 or BS EN ISO 10211:2017 and using guidance from BR443:2019.

We offer simplified calculations to BS EN ISO 6946:2017 and where required numerically modelled U-value calculations using software that is compliant with BS EN ISO 10211:2017.

## System Testing

Knauf Insulation maintains declared product characteristics and qualities which are defined in detail in its Declaration of Performances (DoPs) and product literature. The product literature also includes information relating to Knauf Insulation's requirements and recommendations for installation of its products when being used as part of a system.

Any party using, or planning to use, our products in a system (with or without system testing) where performance may be dependent on product characteristics not declared on our DoPs or our product literature, must contact our Technical Service Team.

Knauf Insulation will not accept liability for any failure in system performance due to product characteristics not declared on DoPs or product literature, or not agreed in a Service Level Agreement. In such an event, any warranty given in relation to those products will be invalidated.

## Real Performance

Glass and rock mineral wool are easier to install correctly than other insulants, such as rigid boards, because they adapt to any slight imperfections in the substrate and knit together, eliminating any air gaps. Mineral wool is engineered to adapt to any imperfections, and any settlement/movement over time, so it maintains close contact and preserves thermal performance for the life of the building.

Evidence shows the absence of air gaps is crucial to achieving real performance in the relevant application. Any insulation material that doesn't deliver 'as-built' thermal performance is failing in its primary purpose, and therefore presents an unnecessary risk as the construction industry seeks to close the performance gap.

## Durability

OmniFit® Rolls are odourless, rot proof, non-hygroscopic, do not sustain vermin and will not encourage the growth of fungi, mould or bacteria. The products will have a life equivalent to that of the structure in which they are incorporated.

# OmniFit® Rolls 34 and 40

## Sustainability

OmniFit® Rolls are manufactured with ECOSE® Technology, our unique plant based binder which contains no added formaldehyde or phenol. They are made from natural raw materials that are rapidly renewable and are less energy-intensive to manufacture than traditional binders. Products made with ECOSE® Technology are soft to touch and easy to handle. They generate low levels of dust and VOCs and have been awarded the Eurofins Gold Certificate for Indoor Air Comfort.

All our glass mineral wool products have been awarded the DECLARE 'Red List Free' label. The Declare label is a third-party accreditation and is similar to a food nutrition label but for building products; it is a straightforward ingredient list and allows product transparency disclosure because it identifies where a product comes from and what it is made of. Declare 'Red List Free' certifies that there is no harmful chemical from the red list in these products.

Our glass mineral wool is made with up to 80% recycled content (including glass from windows, bottles and jars).

OmniFit® Rolls contain no ozone-depleting substances or greenhouse gases. The overall environmental performance of our products is reported in their EPDs (Environmental Product Declarations) which are available on our website. EPDs are available for all our products in accordance with ISO 14025:2023, ISO 21930:2017 and EN 15804+A2:2019.

We have received the BES6001(v4.0) 'Very Good' rating for all our mineral wool in our three plants, which proves that our products are made with constituent materials that are responsibly sourced.

Our 3-tier industry-leading compression-packaging technology allows us to load more product per pack or pallet, and therefore onto each truck that leaves our factories. This means less packaging used per m<sup>2</sup> of insulation, fewer vehicles on our roads, so less associated CO<sub>2</sub> emissions. It also means less transport, handling and storage space required for our customers.

Our individual products and the pallets they sit on are wrapped in low-density polyethylene (LDPE4) plastic, which is made of 30-50% (depending on the supplier) recycled plastic content and is fully recyclable.

## Handling & Storage

OmniFit® Rolls should be stored properly and handled in such a way as to ensure that the products remain clean and undamaged.

The polyethylene packs / shrink-wrapped pallets used for the supply of OmniFit® Rolls are designed for short-term protection only. For longer term protection on site, the product should either be stored indoors or under cover and off the ground. OmniFit® Rolls should not be left permanently exposed to the elements.

If the main hood is removed or damaged, the remaining packs should be kept under cover indoors or protected from the elements by a weatherproof cover. In coastal locations where weather is more extreme and bird damage is more common, use additional covering or store indoors.

The product must be protected from prolonged exposure to sunlight and stored dry and flat.

OmniFit® Rolls are light and easy to handle; care should be exercised to avoid crushing their edges. If damaged, the product should be discarded. Damaged, contaminated or wet product must not be used.

During construction exposed areas of rolls should always be covered at the end of a day's work or in heavy rain. Polyethylene covers should be used to provide protection and prevent work from becoming saturated.

## Knauf Insulation Ltd

Stafford Road, St.Helens, Merseyside, WA10 3LZ Customer Service: 01744 766 766

All rights reserved, including those of photomechanical reproduction and storage in electronic media. Extreme caution was observed when putting together and processing the information, text and illustrations in this document. Nevertheless, errors cannot be completely ruled out. The publisher and editors cannot assume legal responsibility or any liability for incorrect information and consequences thereof. The publisher and editors will be grateful for improvement suggestions and details of possible errors pointed out. For the most up-to-date document versions and product information, please always refer to our website.