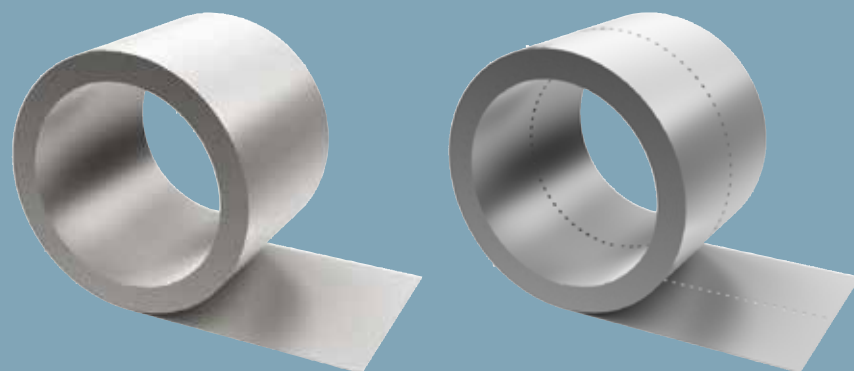





Steel band and VBA profile

For sub-surface behind joints and variable corners



PRODUCT DATA

DESIGNATION	Item thickness, mm	Width mm	Length mm	Item/bundle	Weight	Product photo
Steel band on roll For sub-surface under joints when mounting plasterboards.	0.56	80	Roll 25 m	25	0.35 kg/m	 80
Steel band, shortened For sub-surface under joints when mounting plasterboards.	0.56	80	885 mm	35	0.31 kg/stk	 885 80
VBA profile For variable corners. Approx. 11 kg/rl.		98	Roll 25 m	30	0.44 kg/m	 98

PRODUCT DESCRIPTION:

- Steel band is used as a sub-surface behind joints for inner walls and ceilings. VBA profile is used for variable corners.
- Steel quality: Yield strength 250 N/ mm²
- Corrosion class cl, zinc plating 140 g/m²