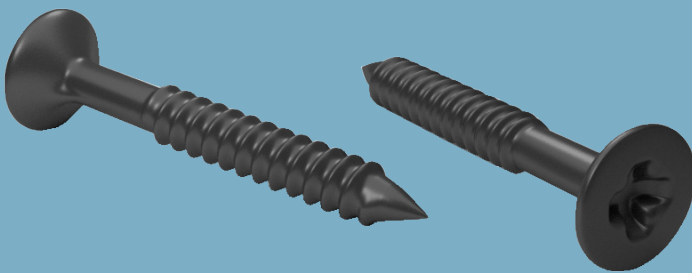


DIAMANT Screw (HGP)

Technical Data Sheet 12/2023



DIAMANT Screw (HGP)

Hanger element

Product Description

Screws with countersunk cross-heads for fixing Diamant gypsum boards to metal framing.

Storage

- Direct contact with water should be avoided.
- Packages should be stored in flat, dry and clean areas.

Standards referred to

EN 14566

Fields of Application

- Diamant Partition Wall Systems
- Diamant Wall Cladding Systems

Properties

- Clean and easy installation.

DIAMANT Screw (HGP)

Hanger element



Technical Data

Description	Diameter(mm)	Standard
DIAMANT Screw (HGP)	3,9	EN 14566

Product Range

Description	Length (mm)	Weight (kg/box)	Packaging Unit (pcs./pallet)	Material Number
DIAMANT Screw (HGP)	23	1,3	1000	216603
	38	2,05		216606
	55	3,1		216607

System Performance Values

Performance values as sound insulation, fire resistance etc. may differ acc. to the drywall system to be applied. Please check the performance values of the drywall systems;

[Knauf Technical Website](#)
[Document Center](#)

Application

Application should be done acc. to the applicable standards (TS 1475) and acc. to the Knauf Technical Brochures of the respective drywall system.

▶ 444 YAPI - 9274

▶ www.knauf.com.tr / www.teknik.knauf.com.tr

▶ teknik@knauf.com

Center: Knauf Moment Beştepe Office, Beştepe Mah. 32.Cadde No:1/212-218 06560 Beştepe-Yenimahalle
/ ANKARA Tel: 0312 297 0100 Faks: 0312 266 4506